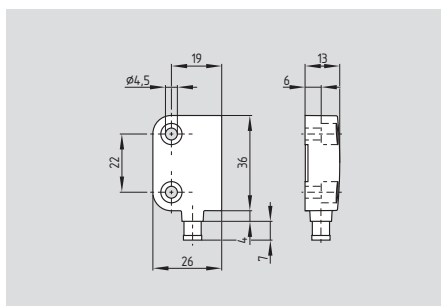


Safety sensor

BNS 260



- Thermoplastic enclosure
- Coded sensor
- Actuation only possible with BPS 260
- Smallest design
- Long life, no mechanical wear
- Protection class IP 67
- Insensitive to lateral misalignment
- Concealed mounting possible
- Insensitive to soiling

Technical data

Standards: IEC 60947-5-3, BG-GS-ET-14
 Design: rectangular
 Enclosure: glass-fibre reinforced thermoplastic
 Protection class: IP 67 to EN 60529
 Connection: Boflex cable or connector M8
 Cable section of Boflex cable: 4 x 0,25 mm²
 with signalling contact: 6 x 0,25 mm²
 Cable section of connector: M8 x 1, 4 poles
 with signalling contact : M8 x 1, 6 poles
 Mode of operation: magnetic
 Actuating magnet: BPS 260, coded
 Control category: up to 4 to EN 954-1
 in combination with a safety monitoring module
 up to PDF-M
 Classification: up to IEC 60947-5-3
 in combination with a safety monitoring module
 S_{ao}: 5 mm
 S_{ar}: 15 mm
 Switching conditions indicator: LED only for ordering suffix G

Max. switching voltage
 without LED: max. 75 VDC
 with LED: max. 24 VDC
 with connector, 6 poles: max. 30 VDC
 Max. switching current
 without LED: max. 400 mA
 with LED: max. 10 mA
 Max. switching capacity
 without LED: max. 10 VA
 with LED: max. 240 mW
 Ambient temperature: - 25 °C ... + 70 °C
 Storage and transport temperature: - 25 °C ... + 70 °C
 Max. switching frequency: 5 Hz
 Resistance to shock: 30 g / 11 ms
 Resistance to vibration: 10 ... 55 Hz, amplitude 1 mm

Contact variants

BNS 260-02z(G)

(3) BK S11 → S12 BU (4)
 (1) WH S21 → S22 BN (2)

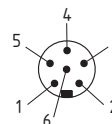


BNS 260-11z(G)

(3) BK S13 → S14 BU (4)
 (1) WH S21 → S22 BN (2)

BNS 260-02/01z(G)

(3) GY S11 → S12 PK (4)
 (1) GN S21 → S22 YE (2)
 (5) WH S31 → S32 BN (6)



BNS 260-11/01z(G)

(3) GY S13 → S14 PK (4)
 (1) GN S21 → S22 YE (2)
 (5) WH S31 → S32 BN (6)

Approvals

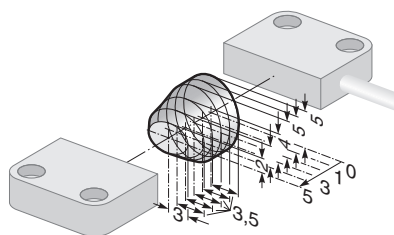


Ordering details

BNS 260-①②z③-④-⑤

No.	Replace	Description
①		Safety contacts:
	11	1 NO / 1 NC
	02	2 NC
②		Signalling contacts:
		No signalling contact
	/01	1 NC
③		Without LED
	G	With LED
④		Cable
	ST	Connector
⑤		Left hand door
	L	Left hand door
	R	Right hand door

Note



Switch on/off diagram

This switch on/off diagram is also valid for the actuator for 90° fixing.

Note

Contact symbols shown for the closed condition of the guard device.

The number in brackets indicate the PIN number of the connector.

The contact configuration for versions with or without LED is identical.

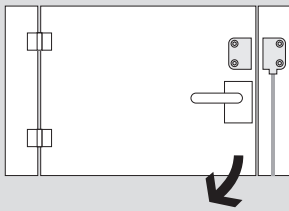
Contacts S21-S22 must be integrated in the safety circuit.

The LED is illuminated when the guard door is closed.

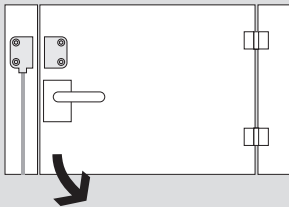
The actuating magnet BPS 260 must be ordered separately.

Safety sensor

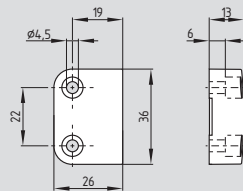
System components



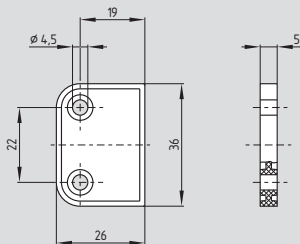
Left hand door



Right hand door



BPS 260

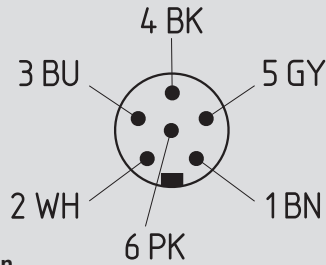


Spacer BNS 260

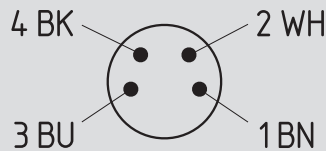
System components



Cable with connector



6-pin



4-pin

Ordering details

Left hand door
Right hand door

ordering suffix -L
ordering suffix -R

Actuating magnets

Actuator and sensor mounted
on same fixing plane
Actuator for 90° fixing

BPS 260-1
BPS 260-2

Spacer

Distanzstück BNS 260

Ordering details

Cable with connector

PVC with snap fitting, 6-pin

with straight connector, 2 m cable **1184342**
5 m cable **1184343**
10m cable **1184344**
with angled connector, 2 m cable **1184345**
5 m cable **1184346**
10m cable **1184347**

PVC with snap fitting, 4-pin

with straight connector, 2 m cable **1184355**
5 m cable **1184356**
10m cable **1184357**
with angled connector, 2 m cable **1184358**
5 m cable **1184359**
10m cable **1184360**